



VPN-1 Edge Wireless

Secure remote connectivity with unmatched scalability



YOUR CHALLENGE

Organizations are increasingly adopting wireless technology to enable employees and business partners to easily access corporate resources through a wireless LAN in remote or branch offices. Because network attacks are on the rise, especially on wireless networks, you need a cost-effective, reliable wireless Internet security solution that can easily be maintained and will remain effective at all times to protect your valuable resources.

OUR SOLUTION

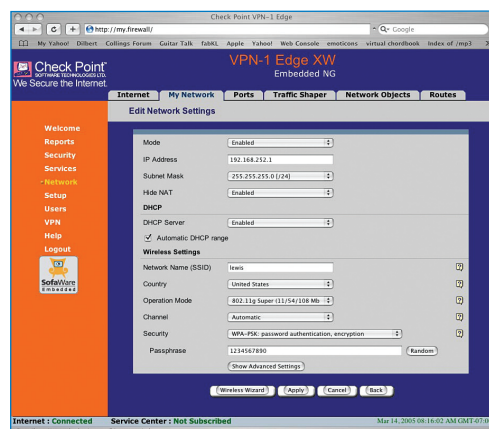
Check Point's VPN-1® Edge™ W provides secure wireless connectivity for remote sites, branch offices, and partner sites by integrating a secure wireless access point with market-leading VPN-1®/FireWall-1® technology, high availability support, and simple Web-based setup. Ideal for large-scale VPN deployments, VPN-1 Edge W is centrally managed for quick setup and management of thousands of Check Point gateways.

SECURE WIRELESS ACCESS

As your business grows, your network must grow to support it. VPN-1 Edge W will enable you to expand your remote and branch office networks without the hassle and cost of extending wiring, and to easily implement innovative new wireless services as they become available.

Superior wireless performance

VPN-1 Edge W supports both the older 802.11b and the latest 802.11g technologies, as well as the new Super-G standard that allows reaching wireless network speeds of up to 108 Mbps, unique in the industry.



VPN-1 Edge W supports unparalleled wireless network speeds of up to 108 Mbps through the new Super-G wireless standard.

PRODUCT DESCRIPTION

Check Point's VPN-1® Edge™ Wireless (W) security appliance family is the first enterprise-level integrated firewall and wired and wireless VPN security solutions for remote sites, branch offices, and partner sites. Like all VPN-1 solutions, VPN-1 Edge W allows enterprises to deploy and centrally manage their network security policy for any remote location, with the added value of applying the security policy to corporate wireless networks.

PRODUCT FEATURES

- Secure wireless access point
- Supports 802.11b, 802.11g, and Super-G wireless technology
- Secure site-to-site and remote access VPN
- Patented Stateful Inspection firewall
- ISP and gateway high availability
- One-Click VPN deployment
- Large-scale management support
- Built-in print server

PRODUCT BENEFITS

- Flexible, secure, high-speed wireless access for remote sites and employees
- Industry-proven security
- Easy setup and deployment
- Simplified administration for large-scale deployments
- Always-on protection



Check Point protects every part of your network—perimeter, internal, Web—to keep your information resources safe, accessible, and easy to manage.

Dual diversity antennas offer excellent range and improved signal quality to support the latest extended-range (XR) technology. With XR (extended range) enabled clients, you achieve up to three times the range of a standard access point—up to 328 yards (300 meters) indoors and up to 1,094 yards (one kilometer) outdoors.

Furthermore, VPN-1 Edge W provides full firewall isolation between wired and wireless users, and between temporary “guest users” and permanent users running VPN client software.

SECURE CONNECTIVITY

VPN-1 Edge W protects the privacy of data communications with strong encryption and authentication. The appliance also supports multiple network topologies, as well as port-based and tag-based VLAN, to meet your business needs. Optionally, the appliance may be used as an internal VPN server, which adds encryption to your LAN, allowing internal LAN and wireless users to be strongly authenticated to the appliance and completely secured from unauthenticated or guest users.

Strong encryption and authentication

VPN-1 Edge W adheres to the IPSec standard, automatically negotiating the use of the strongest possible encryption and data authentication algorithms. The device can encrypt data using AES, 3DES, and DES algorithms, and provides strong authentication by supporting industry standard X.509 digital certificates. Optionally, through an easy-to-use wizard, the user can generate self-signed X.509 certificates directly from the local management interface. To further ease deployment, VPN-1 Edge W can use digital certificates provided by the Check Point Internal Certificate Authority included with Check Point centralized management.

Multiple topology support

Some organizations prefer to deploy security in a hub-and-spoke topology, sending all traffic through a primary VPN gateway. VPN-1 Edge W allows you to route all traffic, even Internet-bound traffic, through a central VPN-1 Pro™ gateway before being sent to its final destination. OPSEC-certified products such as antivirus or URL filtering can inspect traffic at the central site, removing the need to deploy such functionality to each site. For organizations that prefer to send traffic directly to the Internet, VPN-1 Edge W also supports split tunneling.

Flexible VLAN support

VPN-1 Edge W supports VLANs for increased security within the local network by segmenting the internal networks into several virtual networks. It enables non-intrusive deployment into an existing VLAN configuration. Port-based VLAN allows splitting the four LAN ports into four segmented networks.

THE TECHNOLOGY INSIDE THE BOX

VPN-1 Edge W is based on VPN-1 Embedded NG™ technology, which incorporates Check Point's market-leading firewall and VPN software optimized for embedded platforms. VPN-1 Embedded NG is developed by SofaWare Technologies, a Check Point company.

Tag-based VLAN allows the device to be connected to a switch via a VLAN trunk, thereby expanding port density.

UNMATCHED PROTECTION

Tailored to the needs of corporate remote sites, VPN-1 Edge W safeguards corporate resources and ensures the privacy and integrity of data communications, by integrating access control, user authentication, and encryption into one easy-to-use device.

Patented Stateful Inspection firewall

VPN-1 Edge W includes Check Point-patented Stateful Inspection technology, providing the most secure Internet protection in the industry. Only Check Point Stateful Inspection can track the state and context of all network communications, to provide truly complete network protection.

Protecting confidential data

For the strongest safeguards available, VPN-1 Edge W is the answer. It isolates and controls access to your wireless network to protect your data. The appliance authenticates remote user identities, ensuring that only authorized individuals have network access. And it allows using mature, VPN (IPSec) technology to encrypt wireless communication, so that data cannot be viewed or corrupted during transmission.

Dedicated, secured WLAN interface

VPN-1 Edge W has an additional, separate WLAN interface for which you can set specific security rules. It protects the wireless interface by granting access only to authorized users, preventing hackers from invading your LAN and the crucial information it contains.

Broad application support

Through its integration of Check Point patented Stateful Inspection technology, VPN-1 Edge W secures over 150 predefined applications, services, and protocols out-of-the-box, including instant messaging and peer-to-peer applications, database applications, VoIP protocols, and Microsoft NetMeeting.

NON-STOP CONNECTIVITY

Keeping your network up and running is critical to your business. VPN-1 Edge W supports ISP redundancy and gateway high availability to enable non-stop connectivity. The device also supports the H.323 and SCCP (Skinny) VoIP protocols, enabling mission-critical voice and data to be transmitted safely and reliably to and from your corporate network.

ISP redundancy

VPN-1 Edge W supports ISP redundancy to ensure persistent connectivity. The DMZ port may be used as a secondary WAN port. When two different ISPs are connected to the appliance, VPN-1 Edge W will automatically pick up the connection from the other ISP if one fails to deliver a connection.

Gateway high availability

VPN-1 Edge W supports a backup ISP connection and automatic failover across two VPN-1 Edge W gateways to provide always-on protection. High availability is supported for the WAN interfaces, allowing the primary and secondary appliances to share a single WAN IP address for virtually uninterrupted access from the Internet to internal servers at your network.

Dialup backup

VPN-1 Edge W supports dialup backup, a cost-effective feature that provides a primary or secondary Internet connection. You simply connect a dialup modem (regular or ISDN) to the serial port of the VPN-1 Edge W appliance. Using the dialup modem as a primary Internet connection is useful in locations where broadband Internet access is unavailable. VPN-1 Edge W automatically dials the modem if it detects that the primary Internet connection has failed.

RAPID DEPLOYMENT AND MANAGEMENT

VPN-1 Edge W appliances deploy in minutes and can be centrally managed along with other Check Point gateways through Check Point's centralized management, including SmartCenter Pro™, SmartCenter Enterprise, SmartCenter Express, SmartCenter Express Plus, and Provider-1®. These management products (sold separately from the VPN-1 Edge W devices) allow you to centrally define, efficiently manage, and constantly monitor multiple Check Point gateways from a single console. Large-scale management for VPN-1 Edge W is provided by Smart Large Scale Manager (SmartLSM), which is part of SmartCenter Pro. Using SmartLSM, administrators can provision a single security policy—called a Profile—and apply it simultaneously to hundreds of gateways. For very large deployments, the optional Security Management Portal (SMP) module provides profile-based management of thousands of gateways.

Plug and play appliance

VPN-1 Edge W includes wizard-driven Web-based management for very easy setup in minutes by non-technical staff at the remote site. To further ease large-scale deployments, Check Point can preconfigure the device to your specifications, for truly “plug and play” secure connectivity.

One-Click VPN deployment

Check Point centralized management simplifies gateway setup through One-Click VPN Communities. With VPN Communities, you simply drag the icon representing a VPN-1 Edge W appliance and drop it into a VPN community, in the same way you would drag and drop a file into a desktop folder. VPN-1 Edge W automatically inherits community security parameters, receives a X.509 digital certificate from the Check Point Internal Certificate Authority (included with Check Point centralized management), and can immediately establish secure IPsec sessions with the rest of the VPN community.

Integrated bandwidth management

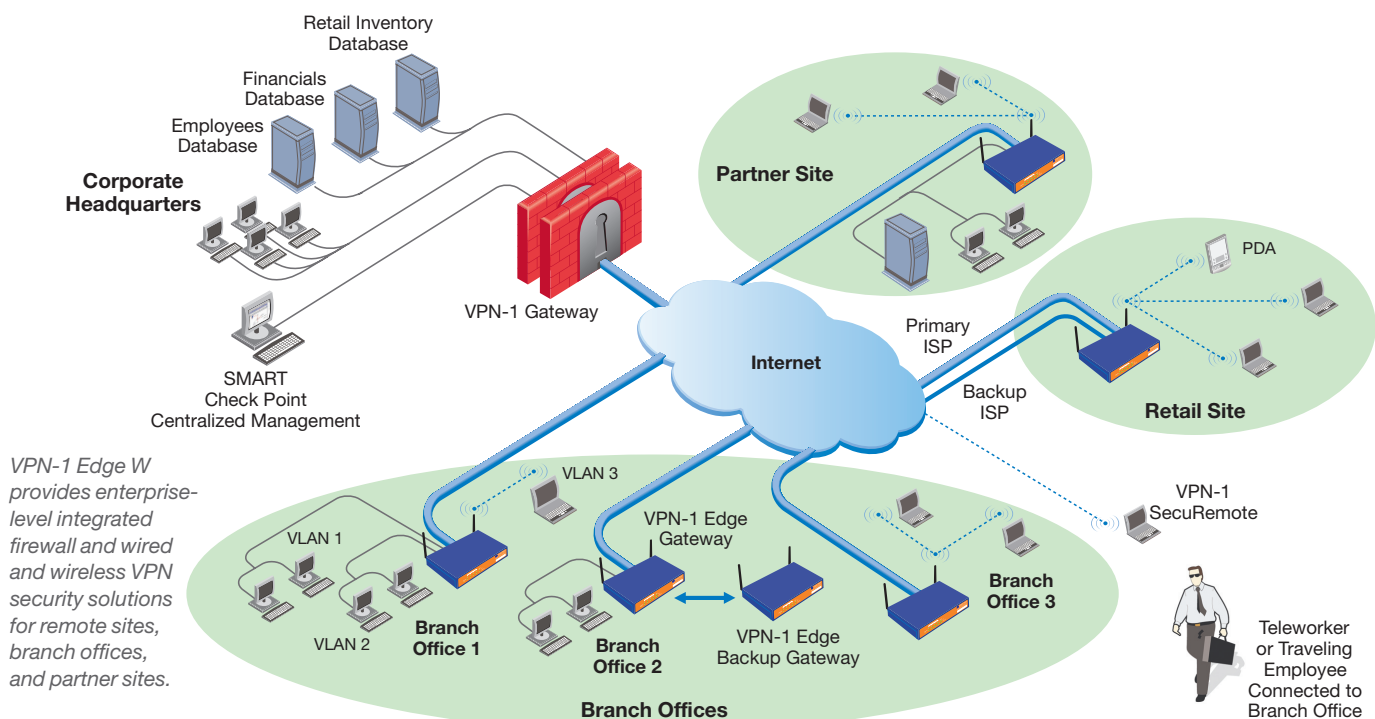
Bandwidth management is important for remote offices where business-critical traffic, such as VPN and VoIP, is competing with other non-critical traffic over a single ISP connection. VPN-1 Edge W includes comprehensive bandwidth management that offers weighted priorities, guarantees, and limits. Bandwidth management is particularly important for real-time applications such as VoIP.

Comprehensive out-of-band management

VPN-1 Edge W supports multiple out-of-band management schemes: CLI (Command Line Interface) via SSH, CLI via serial port, and SNMP.

Always up-to-date security

For effective protection against evolving threats, security software must be kept up-to-date. Check Point SmartCenter Pro includes SmartUpdate which lets you centrally install and upgrade both security and operating system software. SmartUpdate can automatically distribute software updates, eliminating the time and cost associated with one-at-a-time device updates while ensuring consistent, current security across your network.



VPN-1 EDGE W APPLIANCE SPECIFICATIONS		W8	W16	W32	WU
Size	Total users	8	16	32	Unlimited
Interfaces	4-port 10/100 LAN switch	✓	✓	✓	✓
	10/100 WAN port	✓	✓	✓	✓
	10/100 DMZ/WAN2 port	✓	✓	✓	✓
	USB 2.0 ports	2	2	2	2
	Serial port	✓	✓	✓	✓
Firewall and Security Features	Performance	80 Mbps	80 Mbps	80 Mbps	150 Mbps
	Concurrent connections	8,000	8,000	8,000	8,000
	Stateful Inspection firewall	✓	✓	✓	✓
	Port-based and tag-based VLAN support	✓	✓	✓	✓
	Reporting and logging	✓	✓	✓	✓
	Denial of Service (DoS) protection	✓	✓	✓	✓
	Anti-spoofing	✓	✓	✓	✓
	Email antivirus***	✓	✓	✓	✓
	Web content filtering***	✓	✓	✓	✓
	Wall mounting kit	✓	✓	✓	✓
	Anti-theft slot	✓	✓	✓	✓
	VPN	Performance (3DES)	20 Mbps	20 Mbps	20 Mbps
Site-to-site IPSec VPN gateway		✓	✓	✓	✓
Remote access IPSec VPN client		✓	✓	✓	✓
Remote access VPN gateway		1 user	10 users	15 users	25 users
Remote access from internal networks		✓	✓	✓	✓
VPN-1 SecuRemote® client licenses		Included	Included	Included	Included
AES, 3DES, DES encryption		✓	✓	✓	✓
IPSec NAT traversal		✓	✓	✓	✓
Hardware random number generator		✓	✓	✓	✓
Wireless Features		Wireless protocols	IEEE 802.11b (11 Mbps), 802.11g (54 Mbps), Super-G (108 Mbps)*		
	Wireless security	VPN (IPSec) over Wireless, WEP, WPA, WPA-PSK, 802.1x			
	Wireless range (regular mode)	Up to 109 yards (100 m) indoors and 328 yards (300 m) outdoors**			
	Wireless range (extended range mode)	Up to 328 yards (300 m) indoors and 1,094 yards (1 km) outdoors**			
Networking	WAN access protocols	Static IP, DHCP, PPPoE, PPTP, Telstra			
	Static NAT	✓	✓	✓	✓
	Hide NAT	✓	✓	✓	✓
	DHCP server	✓	✓	✓	✓
	DHCP relay	✓	✓	✓	✓
	Bandwidth management	✓	✓	✓	✓
	Works with DSL, Cable, or T1 Connection	✓	✓	✓	✓
	Print server	✓	✓	✓	✓
	High Availability	Supports backup VPN gateway at another site (MEP)	✓	✓	✓
Backup ISP (broadband)		✓	✓	✓	✓
Dial backup (requires external modem)		✓	✓	✓	✓
Automatic Failover		✓	✓	✓	✓
Traffic Shaping (QoS)	Traffic shaper	✓	✓	✓	✓
	DiffServ tagging	✓	✓	✓	✓
VPN User and Gateway Authentication	Site-to-site	Check Point Internal Certification Authority (Diffie-Hellman 1024-bit PKI) digital certificates, X.509 digital certificates or pre-shared secret			
	Remote access (to VPN-1 Pro)	RADIUS, RSA (SecureID), LDAP, MS ActiveDirectory, TACACS, XAUTH			
	Remote access (to VPN-1 Edge W)	RADIUS or pre-shared secret			
Centralized Management Support	Management software	SmartCenter, SmartCenter Pro/SmartLSM, SmartCenter Express, SmartCenter Express Plus, Provider-1, SMP			
	Software updates	SmartUpdate			
	Reporting and monitoring	SmartView Tracker, Syslog			
Local Web-based Management	Installation wizard	✓	✓	✓	✓
	Firewall wizard	✓	✓	✓	✓
	VPN wizard	✓	✓	✓	✓
	Local logs	✓	✓	✓	✓
	HTTPS remote access	✓	✓	✓	✓
Out-of-band Management	CLI via SSH	✓	✓	✓	✓
	CLI via serial port	✓	✓	✓	✓
	SNMP support	✓	✓	✓	✓
Other Hardware Specifications	Physical dimensions H x W x L	1.2 x 8 x 4.8 inches (3.0 x 20.3 x 12.2 cm)			
	Weight	1.55 lbs. (.69 kg)			
	Power	100-240 VAC, 50-60 Hz			
	Regulatory compliance	FCC Part 15 Class B, CE			
	Warranty	One-Year Hardware			

* Super-G and extended range modes only available with select wireless network adapters ** Environmental factors may lower actual range *** Requires SmartCenter or SMP management software

©2004-2005 Check Point Software Technologies Ltd. All rights reserved. Check Point, AlertAdvisor, Application Intelligence, Check Point Express, the Check Point logo, ClusterXL, Cooperative Enforcement, ConnectControl, Connectra, CoSa, Cooperative Security Alliance, Eventia Analyzer, FireWall-1, FireWall-1 GX, FireWall-1 SecureServer, FloodGate-1, Hacker ID, IMsecure, INSPECT, INSPECT XL, Integrity, InterSpec, IQ Engine, Open Security Extension, OPSEC, Policy Lifecycle Management, Provider-1, Safe@Home, Safe@Office, SecureClient, SecureKnowledge, SecurePlatform, SecuRemote, SecureServer, SecureUpdate, SecureXL, SiteManager-1, SmartCenter, SmartCenter Pro, Smarter Security, SmartDashboard, SmartDefense, SmartLSM, SmartMap, SmartUpdate, SmartView, SmartView Monitor, SmartView Reporter, SmartView Status, SmartViewTracker, SofaWare, SSL Network Extender, TrueVector, UAM, User-to-Address Mapping, UserAuthority, VPN-1, VPN-1 Accelerator Card, VPN-1 Edge, VPN-1 Pro, VPN-1 SecureClient, VPN-1 SecuRemote, VPN-1 SecureServer, VPN-1 VSX, VPN-1 XL, Web Intelligence, ZoneAlarm, ZoneAlarm Pro, Zone Labs, and the Zone Labs logo, are trade-marks or registered trademarks of Check Point Software Technologies Ltd. or its affiliates. All other product names mentioned herein are trademarks or registered trademarks of their respective owners. The products described in this document are protected by U.S. Patent No. 5,606,668, 5,835,726 and 6,496,935 and may be protected by other U.S. Patents, foreign patents, or pending applications.

April 11, 2005 P/N 501764



Worldwide Headquarters
 3A Jabotinsky Street, 24th Floor
 Ramat Gan 52520, Israel
 Tel: 972-3-753-4555
 Fax: 972-3-575-9256
 Email: info@checkpoint.com

U.S. Headquarters
 800 Bridge Parkway
 Redwood City, CA 94065
 Tel: 800-429-4391; 650-628-2000
 Fax: 650-654-4233
 www.checkpoint.com



Check Point
 SOFTWARE TECHNOLOGIES LTD.

We Secure the Internet.